

STURGI-SAFE Q/D

FEATURES:

- CSA Certified to ANSI Z21.90 for indoor & outdoor use in the USA & Canada
- Ergonomically designed handle for easy on/off
- Patented safety sleeve prevents open gas flow while connecting & disconnecting gas lines
- Internal thermal shut-off device stops the flow of gas in case of fire or temperatures in excess of 240° F
- For use with LP or Natural Gas pressures up to 5 PSI
- 100% Made in the USA for commercial use



STURGI-SAFE APPLIANCE CONNECTOR


OUR STORY....

MB Sturgis Inc. has been in the business of providing quality outdoor gas connecting products for over 30 years and now we are bringing that history, expertise & innovation to the commercial kitchen market. We have developed the most resilient, durable gas connector ever produced for a commercial kitchen appliance on casters, without exception!!!

The STURGI-SAFE gas connector incorporates four layers of protection to withstand the excessive bending & movement a gas connector is accustomed to experiencing in a commercial kitchen environment. A stronger, more durable gas connector equates to fewer replacement costs for the restaurateur.

The STURGI-SAFE gas connector is the main ingredient in the STURGISYSTEM line of gas connecting products. We recommend connecting the STURGI-SAFE connector to the other ancillary products in MB Sturgis' line of commercial gas products including the STURGISAFE integral ball valve quick disconnect, the COUPLESafe quick disconnect & the STURGI-SWIVEL multi-rotation fitting.

WHAT MAKES IT GREAT?

- ★ 4 LAYERS OF PROTECTION ALLOWS THE STURGI-SAFE CONNECTOR TO HAVE A LONGER LIFE CYCLE RESULTING IN FEWER REPLACEMENT COSTS
- ★ 2 LAYERS OF LEAK PROTECTION ADDS EXTRA SAFETY
- ★ HELICAL METAL CORE ELIMINATES THE POTENTIAL FOR CRACKING
- ★ STAINLESS STEEL BRAIDING HELPS THE CONNECTOR MAINTAIN A TENSILE STRENGTH OF 1250 POUNDS
- ★ TEFLON INNER LINER ALLOWS FOR A NON-TURBULENT GAS FLOW & SUPERIOR LEAK PROTECTION
- ★ STEEL MALE PIPE THREAD SWIVEL END FITTINGS ALLOWS FOR EASY INSTALLATION
- ★ CSA CERTIFIED TO ANSI Z21.69 

STURGI-SWIVEL

FEATURES:

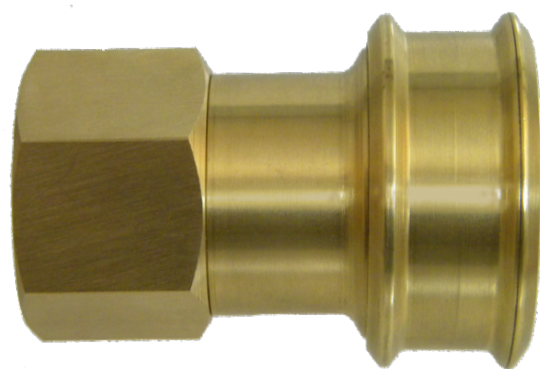
- Multi-Plane, full 360° rotation providing flexibility for easy movement of the kitchen appliance
- Reduces strain on the gas connector when appliance is moved reducing premature wear on the connector
- Dual O-Ring seals at each swivel point provide a long life and extreme temperature performance
- Replaces rigid iron pipe elbows
- For use with LP or Natural Gas pressures up to 100 PSI



COUPLE SAFE Q/D

FEATURES:

- CSA Certified to ANSI Z21.41 for indoor & outdoor use in the USA & Canada
- Connect & Disconnect without using wrenches
- Allows easy movement of commercial kitchen appliances on casters
- Internal thermal shut-off device stops the flow of gas in case of fire or temperatures in excess of 240° F
- For use with LP or Natural Gas pressures up to 5 PSI
- 100% Made in the USA for commercial use



TAPERED MPT SWIVEL FITTING

Zinc die coated steel, MPT Swivel end fitting allows for an easy, no leak connection to the gas line and the appliance.

PTFE TEFLON INNER LINER

The gas containing inner liner of the Sturgi-Safe Gas Connector is an 800° Teflon tube providing a non-leak, turbulent free gas path.

ANTI-MICROBIAL PVC COVER

The second layer of leak protection also prohibits growth of mold & bacteria in a food environment. Smooth, easy to clean surface.



STAINLESS STEEL OVERBRAID

95% coverage stainless steel overbraid helps maintain a tensile strength upwards of 1000 pounds to ensure durability of the connector.

STURGI-CORE

A fully interlocking helical core with fire resistant packing. Allows for constant movement while protecting against stretching and cracking typically seen in corrugated appliance connectors.

TETHER KIT

ANSI Z21.69 states that "the connector, when used on caster mounted equipment, shall be installed with a restraining device, which prevents transmission of the strain on the connector."

The Tether Kit includes a plastic covered heavy gauge steel cable, one 3" toggle eye bolt for the wall, one 2" eye bolt for the appliance, one lock nut, two steel nuts, four fender washers & two spring links.

